

STOW CITY CENTER PLAY FOR ALL PROJECT

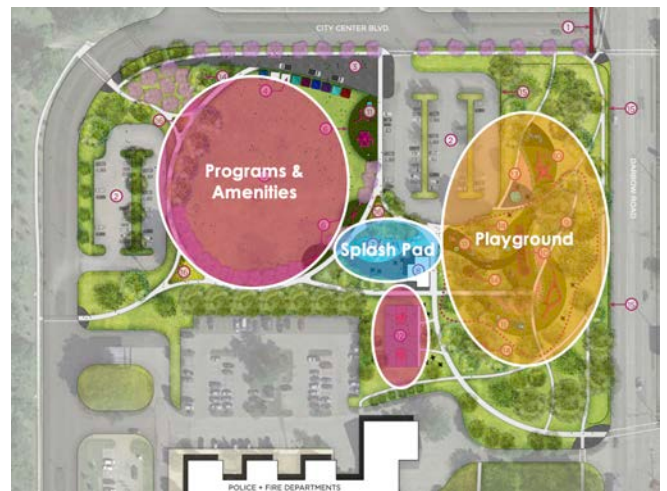
INCLUSION CENTERED, FUN FOCUSED

Overview

The City of Stow's Play for All Project is an inclusion-centered, fun-focused initiative to develop the existing City Center footprint into a recreation hub that will be a catalyst for community health and vitality.

A research event was organized to coincide with Pizza Palooza festivities on January 26, 2020, and focused on collecting data from resident Seniors (65+), Adults (19-65), Teens (13-18), and Kids (12 and under).

More than 400 people participated, generating 3,000+ data points with 98% in favor of the Play for All Project.



Survey Results

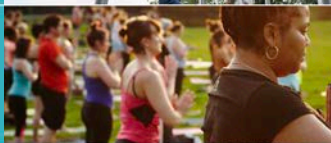
What is the most important feature?

40% splash pad

31% playground

18% programs

7% amenities



How important is a new play hub for you/your family?

83% very important

Is socializing at the City Center important to you?

57% very important

How likely are you to invite friends/family to join you?

78% very likely

Top 5 Winners from Community Research

Playground



#1 Rope Canopy 19%



#2 Super Tower Slide 16%

- #3 Tree World 14%
- #4 Access Spinner 11%
- #5 Cube Climber 9%

Splash Pad



#1 Water Playland 26%



#2 Night Fountains 21%

- #3 Bucket Splasher 11%
- #4 Water Slide 9%
- #5 Modern Splasher 9%

Programs



#1 Family Night 13%



#2 Movies & Stars 12%

- #3 Ice Cream Social 11%
- #4 Farmer's Market 11%
- #5 Concert Series 10%

Amenities



#1 Shade Pavilion 14%



#2 Benches & Tables 13%

- #3 Outdoor Fitness 9%
- #4 Dog Station 9%
- #5 Changing Room 9%

“Public park and recreation spaces help reduce obesity and incidence of chronic disease, provide a connection to nature which relieves stress levels, tightens interpersonal relationships, improves mental health, and fosters overall wellness and healthful habits, such as becoming tobacco-free and engaging in enrichment opportunities that add balance to life.”

- National Recreation and Park Association (NRPA)

How do we make the City Center accessible for you & everyone in our community?

Sufficient parking.

Wheelchair accessible entrances and exits and also pathways for bikes.

Ample parking. Ramps.
Clean restrooms.

Just build it!!!! People will come!

